



ERGO LIGHT ONE

PLATFORM WITH PLUG-IN LEGS

PLATFORM WITH PLUG-IN LEGS



A slimline version of our all-rounder. Using cutting-edge 2M lightweight construction technology, we have reduced the weight of the high-quality ERGO one by more than 30 percent, without compromising on its characteristic features, such as maximum stability and outstanding quality.



Special features

The well-known and beloved ERGOnomic aluminium profile with inner and outer groove channels has been updated with a closed 90° cast iron corner and additional M10 thread inserts.

Accessories or platform railing can be attached at the side or from above easily and quickly using standard screws.



Groove channels

Both the peripheral and the inner multi-functional groove channels can be used to attach system accessories.

The platforms can be connected using clamp connectors or assembly brackets, making the system compatible with all commercial platforms.



Surfaces

A non-slip phenolic plywood (birch throughout) made with waterproof glue or a 12-mm multiplex plywood are available as standard base boards.

Additional surfaces such as carpet, plexiglass etc. are also available upon request, expanding our product portfolio further.



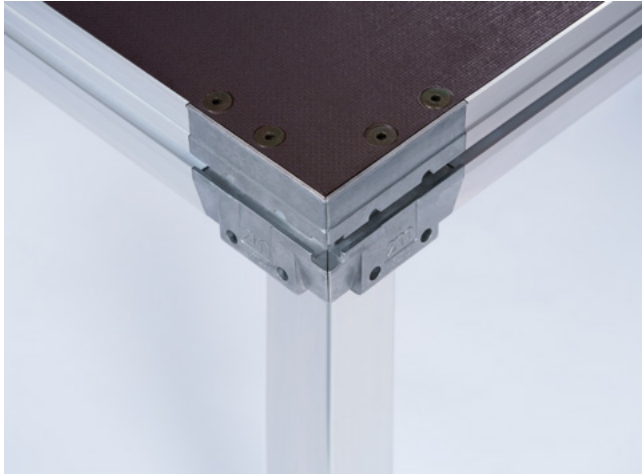
Leg mount

The 2M leg mount made of die-cast zinc is designed for use with round pipe or square pipe with dimensions of 40 mm to 60 mm.

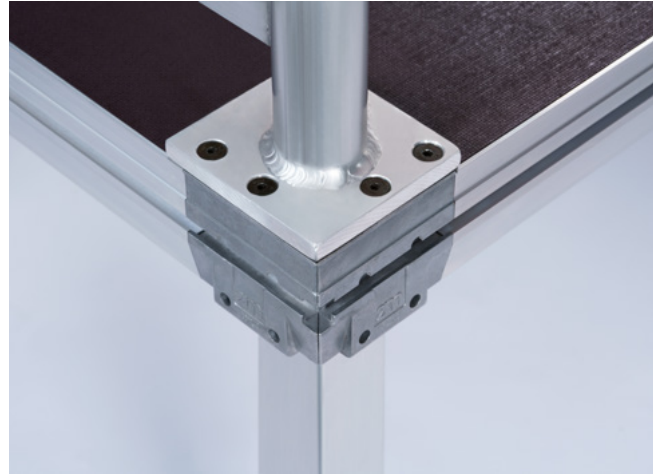
The leg can be compacted using an M10 adjustment screw or via an eccentric quick release system depending on the customer's wishes – and it is possible to switch between these configurations in seconds.



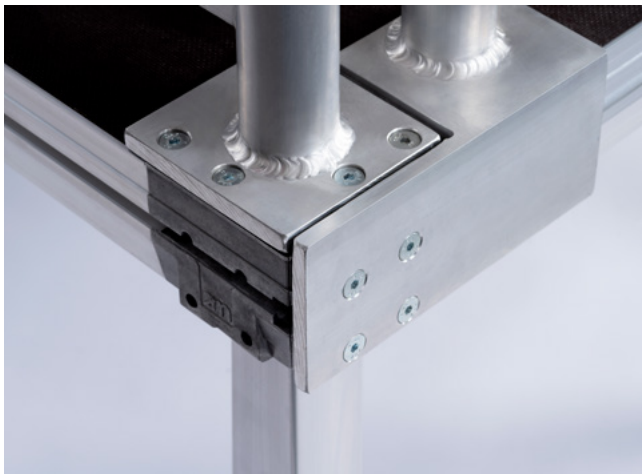
DETAILS



7948 one corner without railing (screw connections visible)



7955 one corner including 1 rails



7961 one corner including 2 rails



7973 Lower brace for lightweight versions

TECHNICAL DATA



Product category	Platforms with plug-in legs
Movable/Stationary	movable
Dimensions	2 m x 1 m
Special size possible	yes
Weight	38 kg
Backing plate thickness	12 mm
Frame height	90 mm
Pit depth	-
Horizontal test load	1/10 of the vertical test load
Vertical test load	8.5 kN/m ² (867 kg/m ²)
Horizontal traffic load	1/10 of the vertical traffic load
Vertical traffic load	5.0 kN/m ² (510 kg/m ²)
Max. stage height	-
TÜV certificate	DIN 13814, 4112, 1055, 15921



ERGO light one



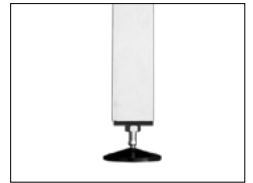
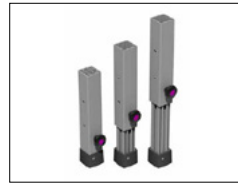
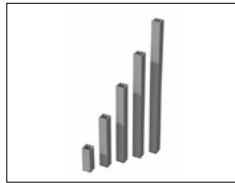
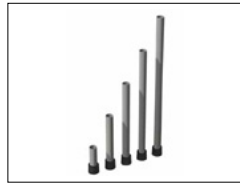
ACCESSORIES



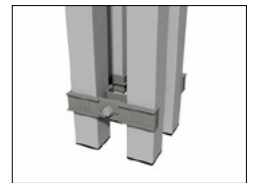
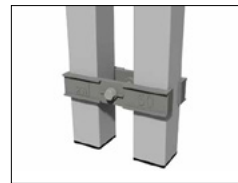
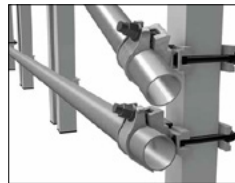
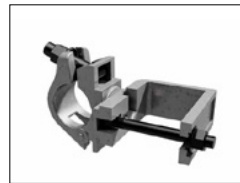
**Stairs, handrails
and banisters**



Feet



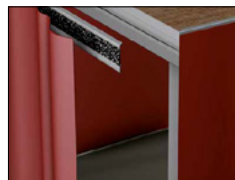
Connectors



Transport



Facing



**WORKING TOGETHER
TO GET THE BEST RESULTS
WITH YOUR VISION
AND OUR PASSION.**

References:

[2M-DEUTSCHLAND.DE/EN/REFERENCES](https://2m-deutschland.de/en/references)



ENQUIRE NOW!



Andre Nölle
Sales Manager

→ 02102/13399-13
→ info@2m-deutschland.de



Gerrit Pape
Project Manager

→ 02102/13399-14
→ info@2m-deutschland.de