



# ERGO NEXTRA

**PLATFORM WITH FRAME SYSTEMS**

## PLATFORM WITH FRAME SYSTEMS



Probably the best-selling platform system for large span widths with an ergonomically designed aluminium frame and both internal and external groove channels. Designed for wide superstructures or complex stand installations with raked staging configurations.



### Ergonomic aluminium profile

The ERGOnomically shaped aluminium upper frame is comfortable in the hand despite its thickness of 166 mm and also allows the platform to be carried over long distances.



### Groove channels

Both the peripheral and the two inner multi-functional groove channels can be used to attach system accessories.



### Leg mount

The 2M leg mount is designed for use with round tubing or square tubing with dimensions of 40 mm to 60 mm.

The leg can be compacted using an M10 adjustment screw or via an eccentric quick release system depending on the customer's wishes.



### Surfaces

A non-slip phenolic plywood (birch throughout) made with waterproof glue or a 25-mm beech wood blockboard are available as standard base boards.

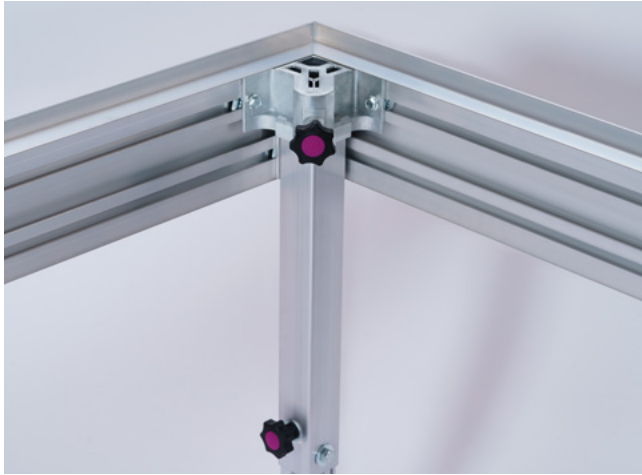


### Special structures

Custom manufacturing of excess lengths, cut-outs or triangular designs according to your specifications.



## DETAILS



Inner profile frame + leg mount with handwheel



Outer profile frame incl. outdoor covering panel

## TECHNICAL DATA



|                                |  |
|--------------------------------|--|
| <b>Product category</b>        | Platforms with frame systems                   |
| <b>Movable/Stationary</b>      | movable  |
| <b>Dimensions</b>              | 2 m x 1 m, 2.07 m x 1.04 m, 2.07 m x 0.86 m    |
| <b>Special size possible</b>   | yes  |
| <b>Weight</b>                  | 50 kg  |
| <b>Backing plate thickness</b> | 22 mm  |
| <b>Frame height</b>            | 166.6 mm                                       |
| <b>Pit depth</b>               | -  |
| <b>Horizontal test load</b>    | 1/10 of the vertical test load                 |
| <b>Vertical test load</b>      | 8.5 kN/m <sup>2</sup> (867 kg/m <sup>2</sup> ) |
| <b>Horizontal traffic load</b> | 1/10 of the vertical traffic load              |
| <b>Vertical traffic load</b>   | 5.0 kN/m <sup>2</sup> (510 kg/m <sup>2</sup> ) |
| <b>Max. stage height</b>       | -  |
| <b>TÜV certificate</b>         | DIN 13814, 4112, 1055, 15921                   |



**WORKING TOGETHER  
TO GET THE BEST RESULTS  
WITH YOUR VISION  
AND OUR PASSION.**

**References:**

**[2M-DEUTSCHLAND.DE/EN/REFERENCES](https://2m-deutschland.de/en/references)**



**ENQUIRE NOW!**



**Andre Nölle**  
Sales Manager

→ 02102/13399-13  
→ [info@2m-deutschland.de](mailto:info@2m-deutschland.de)



**Gerrit Pape**  
Project Manager

→ 02102/13399-14  
→ [info@2m-deutschland.de](mailto:info@2m-deutschland.de)