



ERGO ONE LAY

SCAFFOLDING PLATFORM

SCAFFOLDING PLATFORM



The platform system for all events. Regardless of the time of year or the location – the ERGO one lay is a great choice for any event.



Special features

The well-known and beloved ERGOnomic aluminium profile with inner and outer groove channels has been updated with a closed 90° cast iron corner and additional M10 thread inserts. Accessories or platform railing can be attached at the side or from above easily and quickly using standard screws.



Universal plug-in leg mount

The unique leg mount from 2M enables the use off all conventional plug-in leg systems using round tubing with a diameter of 48.3 mm and square tubing with a diameter of 55 x 55 mm or 60 x 60 mm. The legs can be compacted using either an eccentric quick release system or using adjustment screws, depending on your requirements.



Robust plastic corner

Unlimited use in scaffolding constructions.

Robust design made of glass fibre-reinforced plastic with multifunctional guide.

Simple connection of clamp connectors and accessories thanks to the open groove channel.



Weatherproof surface

Available as phenolic plywood (birch throughout) or Hexa plywood – both of which are resistant to the effects of weathering.

Countersunk screws for an even surface with a high-quality appearance.

The surface is connected via screws, which makes it easy to replace in the event of a repair.



Frame profile

The frame profile, which is the same all the way around, allows you to install the stage platforms in any direction within an event construction. Thanks to the ergonomic, bevelled profile, assembling the stage platforms is simple and comfortable.



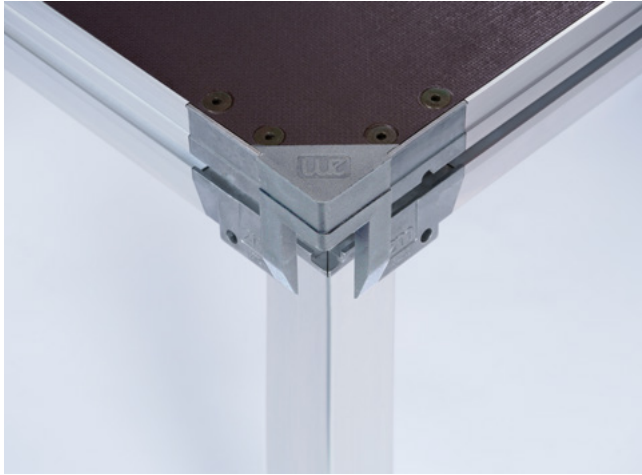
Groove channel

Inner groove channel is used to mount the integrated platform retainer.

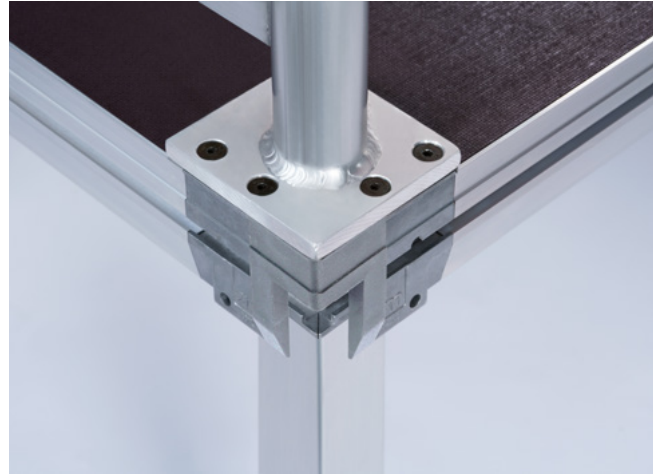
Outer groove channel enables compatibility with a wide range of other platform systems.



DETAILS



one lay corner without railing (screw connections visible)



one lay corner including 1 rail



TECHNICAL DATA



Product category	Scaffolding platforms
Movable/Stationary	movable
Dimensions	2 m x 1 m, 2.07 m x 1.04 m, 2.07 m x 0.86 m
Special size possible	yes
Weight	38 kg
Backing plate thickness	12 mm
Frame height	93 mm
Pit depth	-
Horizontal test load	1/10 of the vertical test load
Vertical test load	8.5 kN/m ² (867 kg/m ²)
Horizontal traffic load	1/10 of the vertical traffic load
Vertical traffic load	5.0 kN/m ² (510 kg/m ²)
Max. stage height	-
TÜV certificate	DIN 13814, 4112, 1055, 15921



**WORKING TOGETHER
TO GET THE BEST RESULTS
WITH YOUR VISION
AND OUR PASSION.**

References:

[2M-DEUTSCHLAND.DE/EN/REFERENCES](https://2m-deutschland.de/en/references)



ENQUIRE NOW!



Andre Nölle
Sales Manager

→ 02102/13399-13
→ info@2m-deutschland.de



Gerrit Pape
Production Manager

→ 02102/13399-14
→ info@2m-deutschland.de

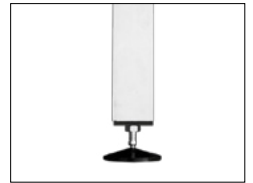
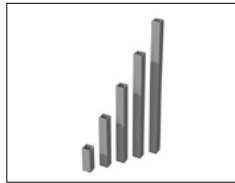
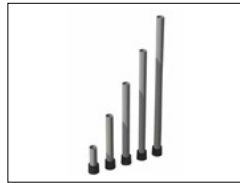
ACCESSORIES



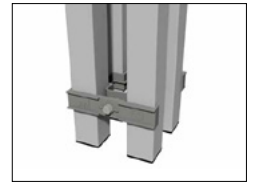
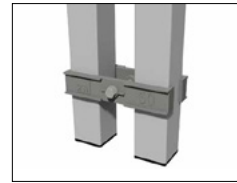
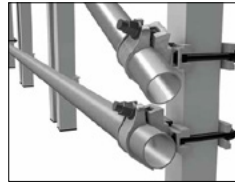
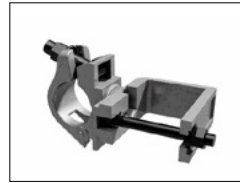
Stairs, handrails and banisters



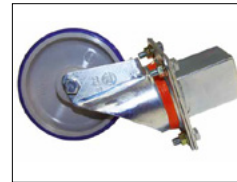
Feet



Connectors



Transport



Facing

