



ERGO ONE

PLATFORM WITH PLUG-IN LEGS

PLATFORM WITH PLUG-IN LEGS



The all-rounder among stage platforms. This model combines all of the positive features of the 2M ERGO stage platforms, making it the most modern, pioneering product in the 2M product range.



Special features

The well-known and beloved ERGOnomic aluminium profile with inner and outer groove channels has been updated with a closed 90° cast iron corner and additional M10 thread inserts. Accessories or platform railing can be attached at the side or from above easily and quickly using standard screws.



Groove channels

Both the peripheral and the inner multi-functional groove channels can be used to attach system accessories.

The platforms can be connected using clamp connectors or assembly brackets, making the system compatible with all commercial platforms.



Surfaces

A non-slip phenolic plywood (birch throughout) made with waterproof glue or a 22-mm multiplex plywood are available as standard base boards.

Additional surfaces such as carpet, plexiglass etc. are also available upon request, expanding our product portfolio further.

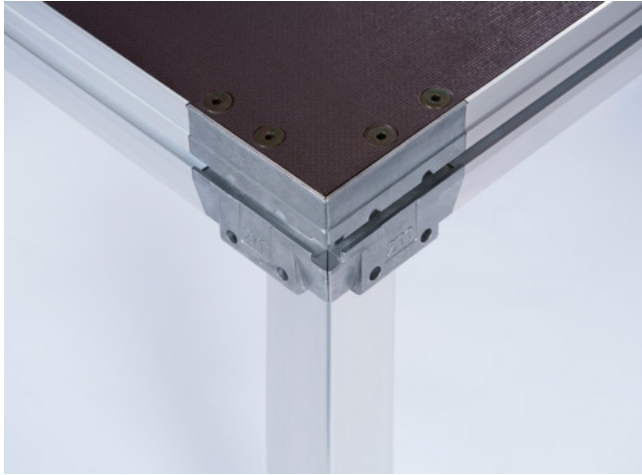


Leg mount

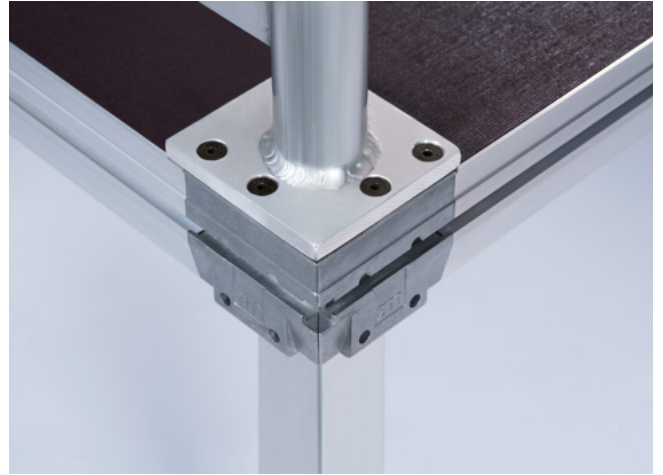
The 2M leg mount made of die-cast zinc is designed for use with round pipe or square pipe with dimensions of 40 mm to 60 mm.



DETAILS



7948 one corner without railing (screw connections visible)



7955 one corner including 1 rail



7961 one corner including 2 rails

TECHNICAL DATA



Product category	Platforms with plug-in legs
Movable/Stationary	movable
Dimensions	2 m x 1 m
Special size possible	yes
Weight	44 kg
Backing plate thickness	22 mm
Frame height	90 mm
Pit depth	-
Horizontal test load	1/10 of the vertical test load
Vertical test load	8.5 kN/m ² (867 kg/m ²)
Horizontal traffic load	1/10 of the vertical traffic load
Vertical traffic load	5.0 kN/m ² (510 kg/m ²)
Max. stage height	-
TÜV certificate	DIN 13814, 4112, 1055, 15921



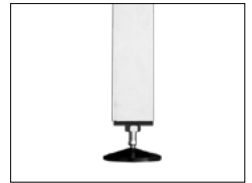
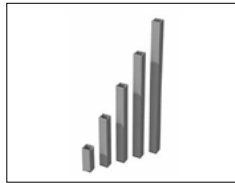
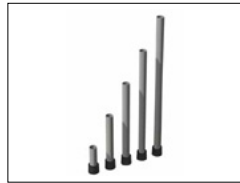
ACCESSORIES



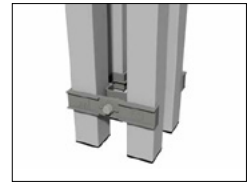
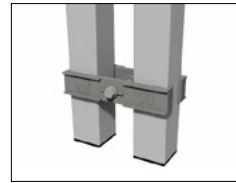
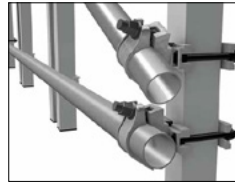
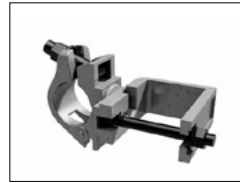
Stairs, handrails and banisters



Feet



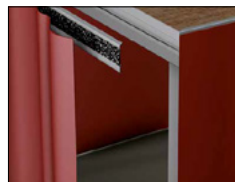
Connectors



Transport



Facing



**WORKING TOGETHER
TO GET THE BEST RESULTS
WITH YOUR VISION
AND OUR PASSION.**

References:

[2M-DEUTSCHLAND.DE/EN/REFERENCES](https://2m-deutschland.de/en/references)



ENQUIRE NOW!



Andre Nölle
Sales Manager

→ 02102/13399-13
→ info@2m-deutschland.de



Gerrit Pape
Project Manager

→ 02102/13399-14
→ info@2m-deutschland.de